



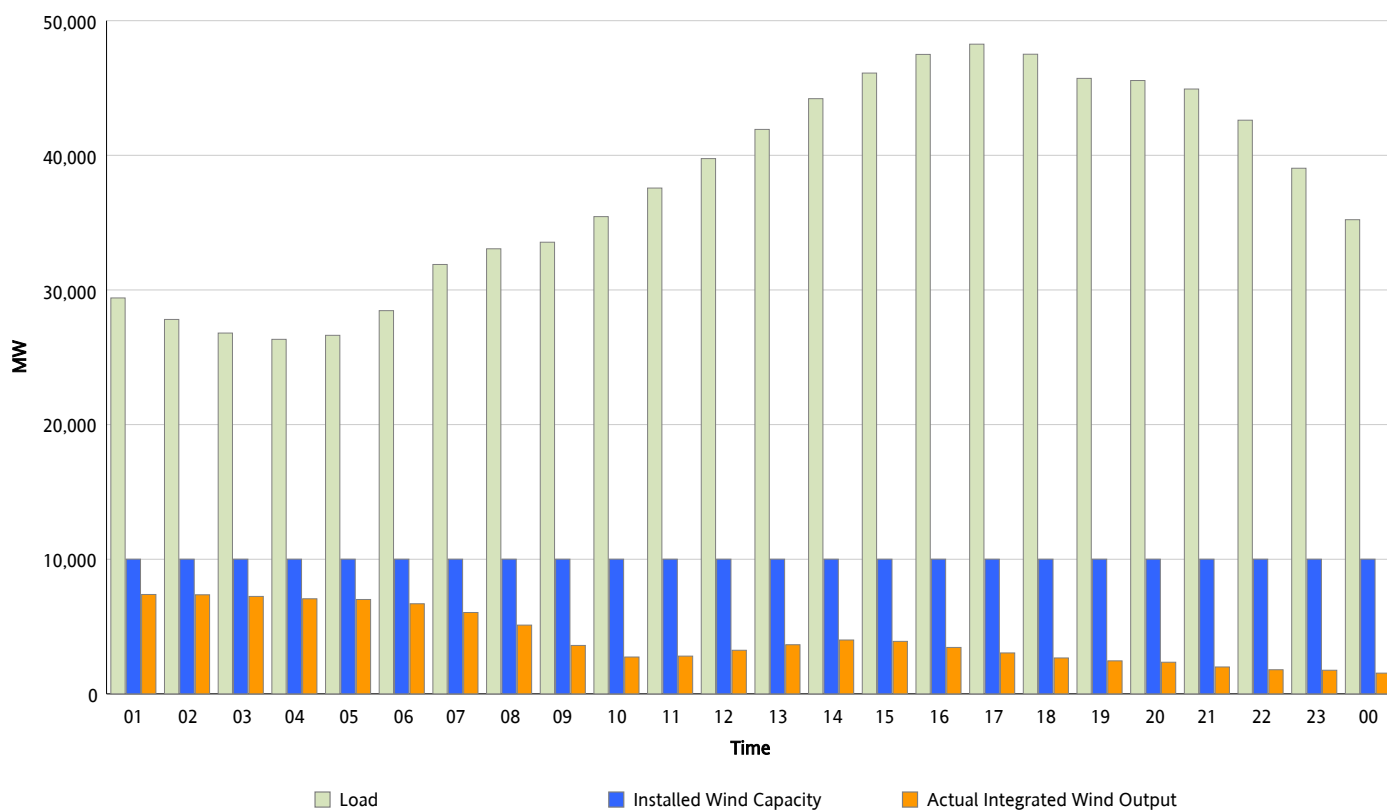
## ERCOT Grid Operations

### Wind Integration Report : 10/04/2012

Peak Load	48,257 MW
Load Peak Hour (HE)	17
Wind Over Peak	3,041 MW
Wind Record 06/19/12	8,368 MW
Max Wind Value*	7,632 MW
Wind Peak Time	00:00
Wind Integration %	25.02 %

#### Hourly Average Actual Load vs. Actual Wind Output

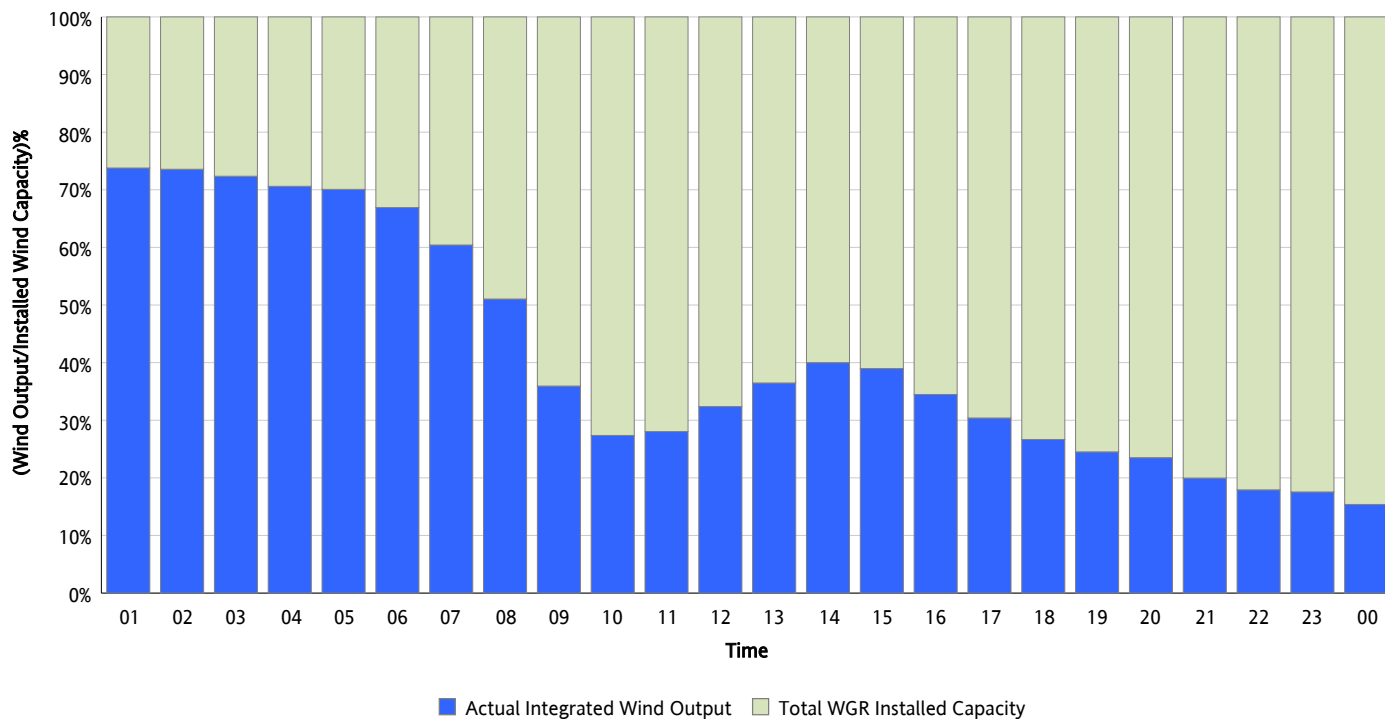
10/04/2012



\* Wind Record and Wind Max represent instantaneous values and the rest of the values are integrated over the hour

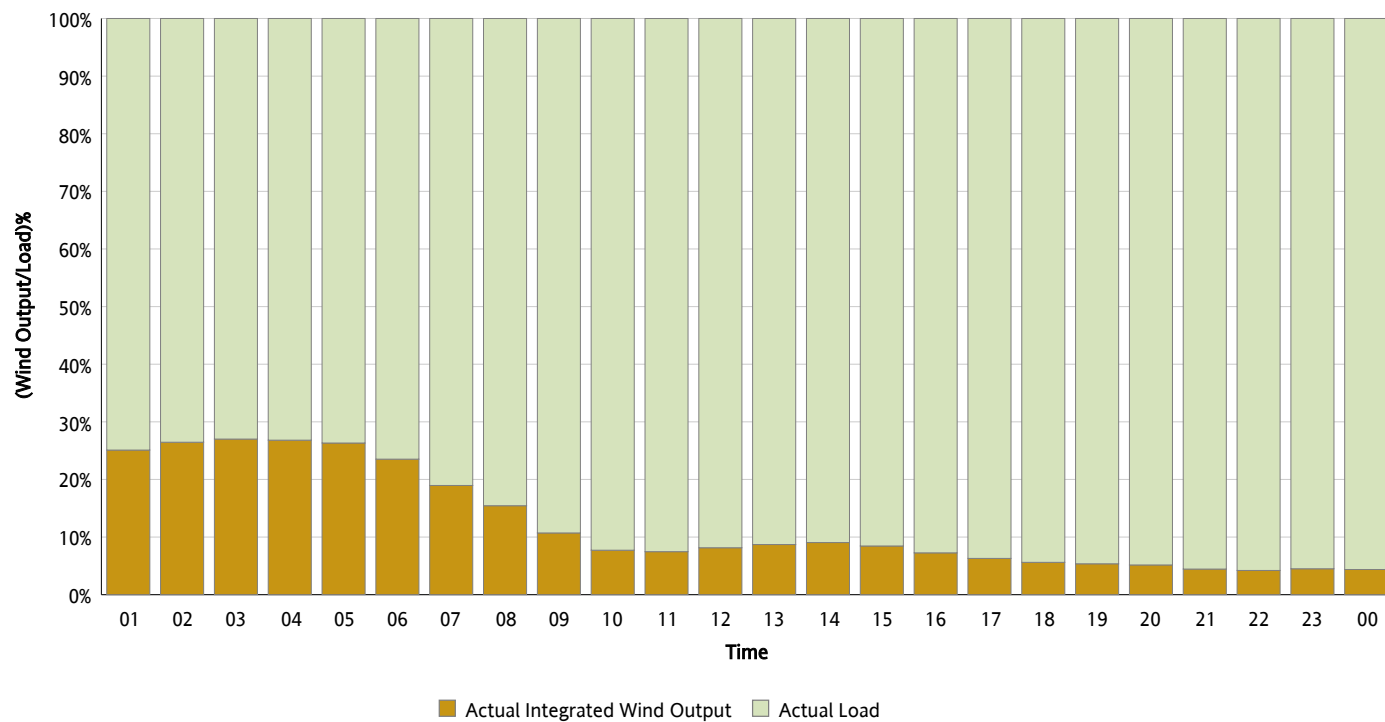
## Actual Wind Output as a Percentage of the Total Installed Wind Capacity

10/04/2012



## Actual Wind Output as a Percentage of the ERCOT Load

10/04/2012



## ERCOT Load vs. Actual Wind Output

09/27/2012 - 10/04/2012

